

# Gross Test Quiz

## 肉眼病變測驗

梁鍾鼎

2016 0617

# 肉眼病變判讀要領

- TYPES OF GROSS DIAGNOSES
  - A. Morphologic diagnosis. This is a summary of the lesion, but generally does not describe what is causing the lesion (i.e. diffuse severe granulomatous enteritis).
  - B. Etiologic diagnosis. This type of diagnosis is restricted to two words only - the causative agent and the site of the lesion (i.e., mycobacterial enteritis).
  - C. Etiology. This is the causative agent only - it may also be stated as cause, causative agent, or etiologic agent. It does not ask for the organ, distribution, or any other type of information (i.e., *Mycobacterium avium subsp. paratuberculosis*).
  - D. Name the disease. This type of diagnosis asks for a disease name in common usage (i.e., Johne's disease).

## Morphologic Diagnosis

- Organ, condition (**Types of Inflammation**), distribution, duration, severity
- E.g. Glossitis, pyogranulomatous, focal, chronic, marked

## Etiologic Diagnosis

- Organ, etiology
- E.g. Glossal actinobacillosis/Actinobacillus glossitis

## Cause/Etiology

- E.g. *Actinobacillus lignierisi*; Vitamin E/Selenium imbalance; NSAID toxicity; genetic deficiency of dystrophin

## Condition/Disease

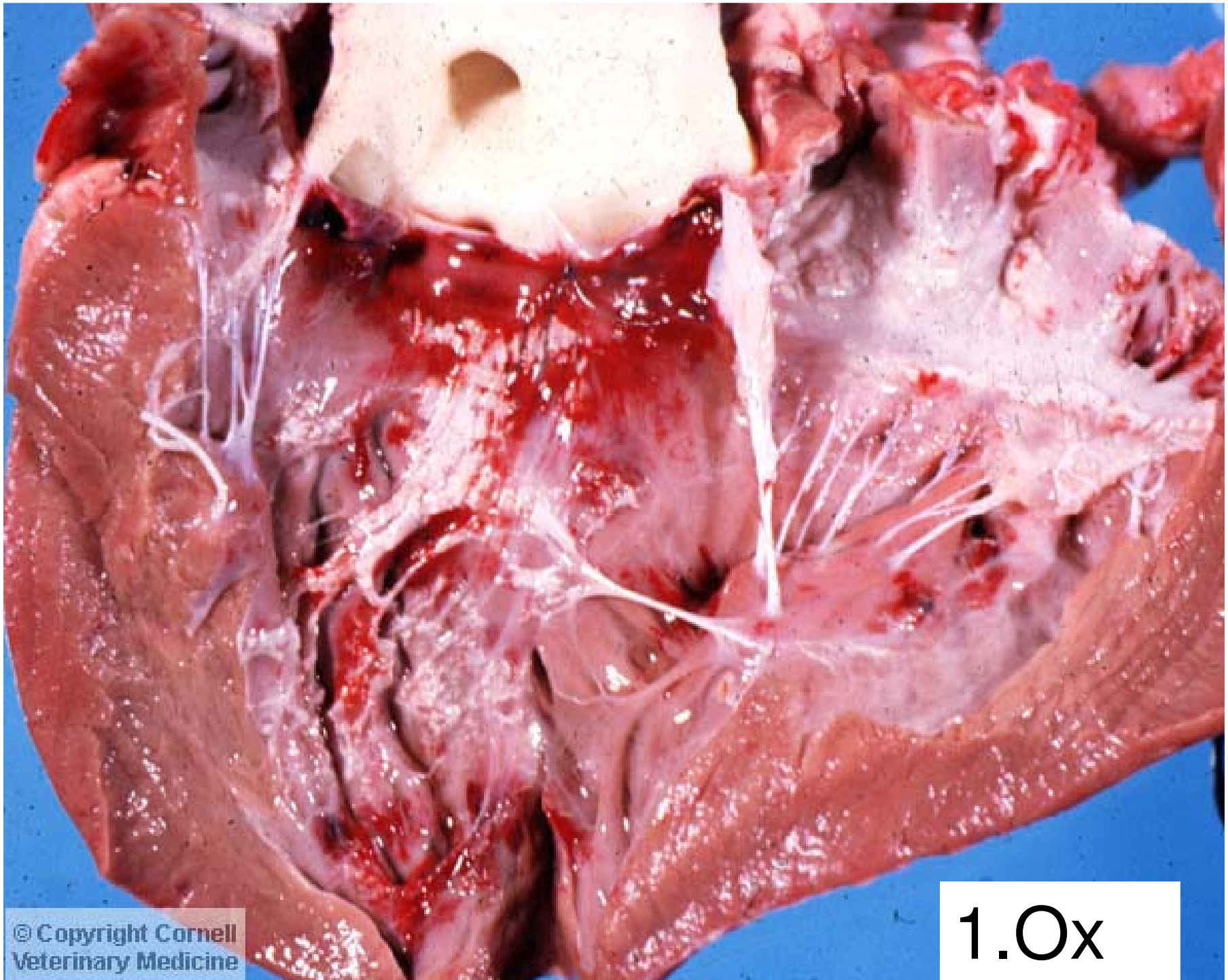
- E.g. Wooden tongue; White muscle disease; Muscular dystrophy; Nutritional/renal secondary hyperparathyroidism; nutritional osteodystrophy

## Mechanism

- E.g. Left recurrent laryngeal nerve damage → neurogenic atrophy left cricoarytenoideus dorsalis muscle....
- E.g. Nutritional deficiency Ca & /or deoxyhydrocholecalciferol → increase PTH → decrease bone Ca → increase remodeling in absence of Ca → fibrous proliferation → hypertrophic fibrous osteodystrophy

# Please write down

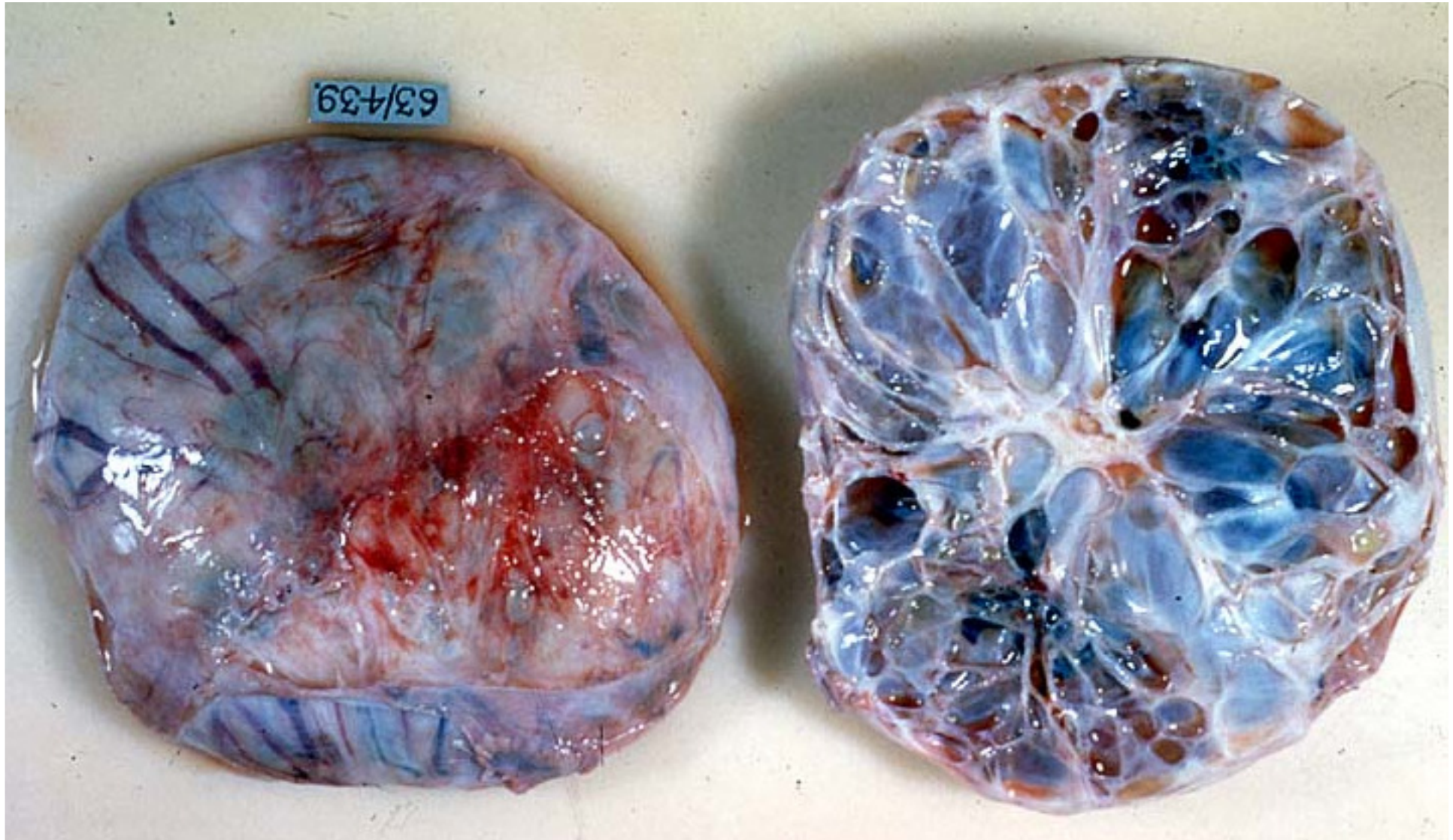
- 1. Morphologic Diagnosis
- 2. Possible Cause/Etiology



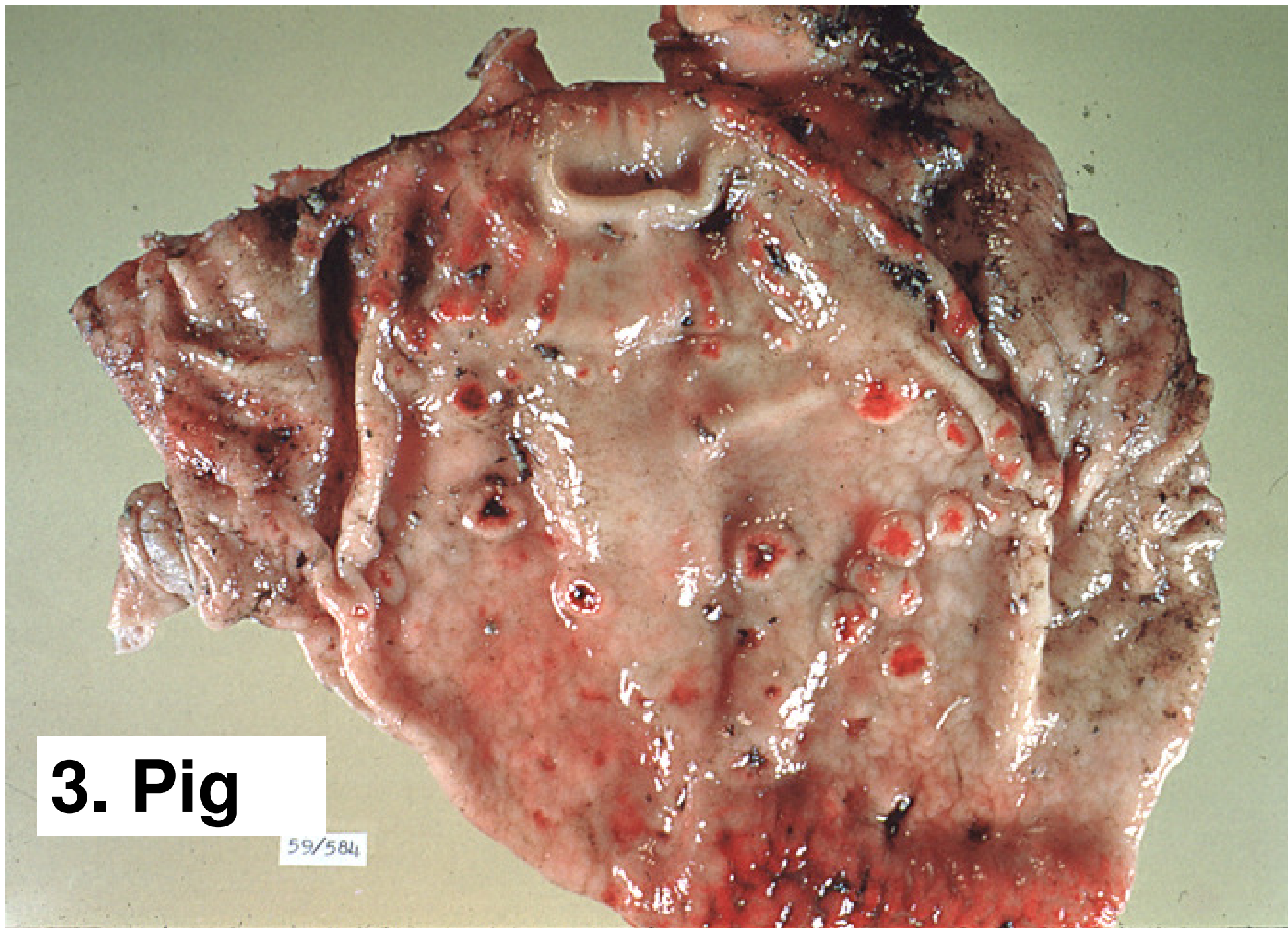
© Copyright Cornell  
Veterinary Medicine

1.0x

## 2. Horse







**3. Pig**

59/584

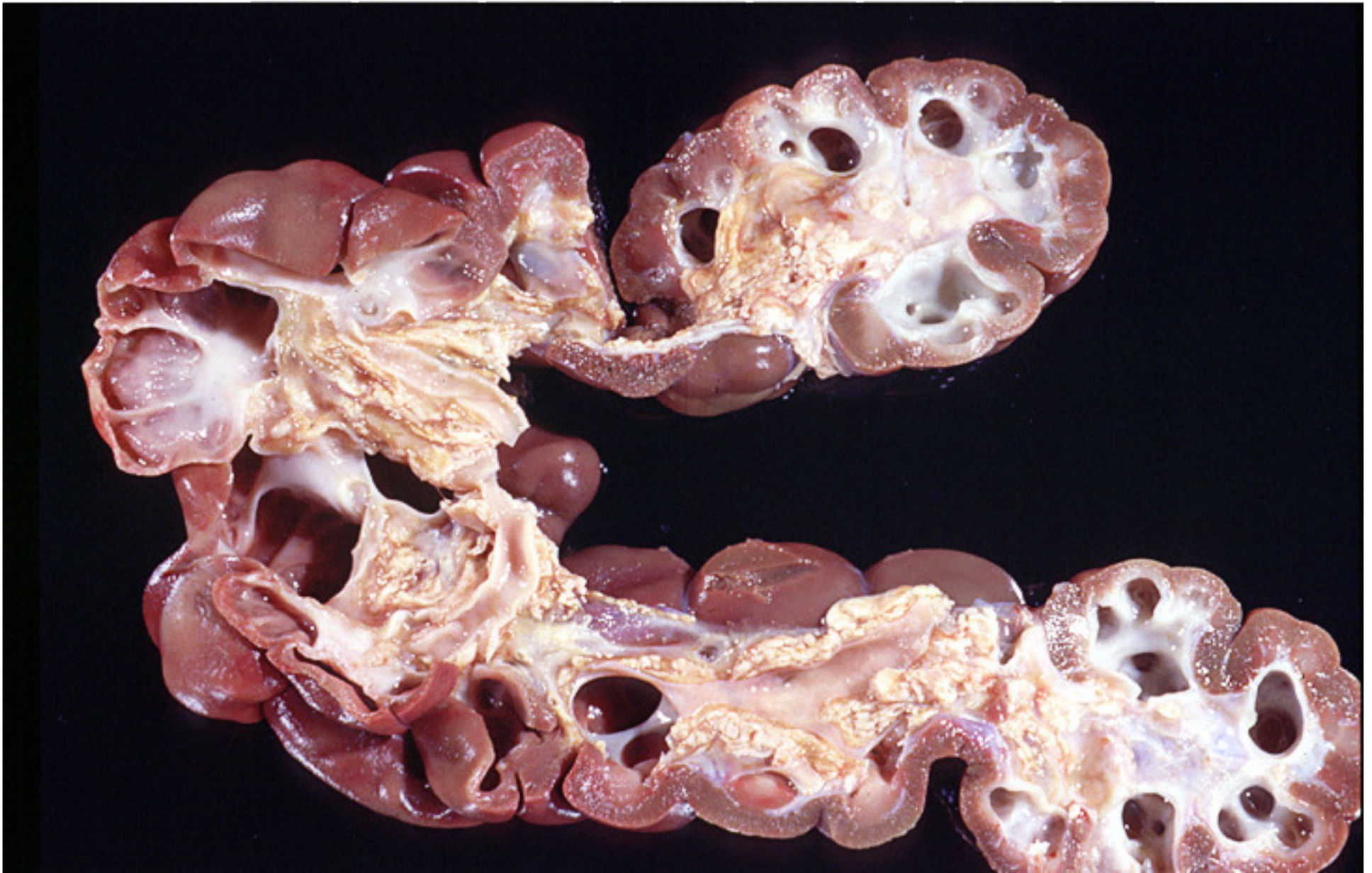


4. Gerbil



5. Ox

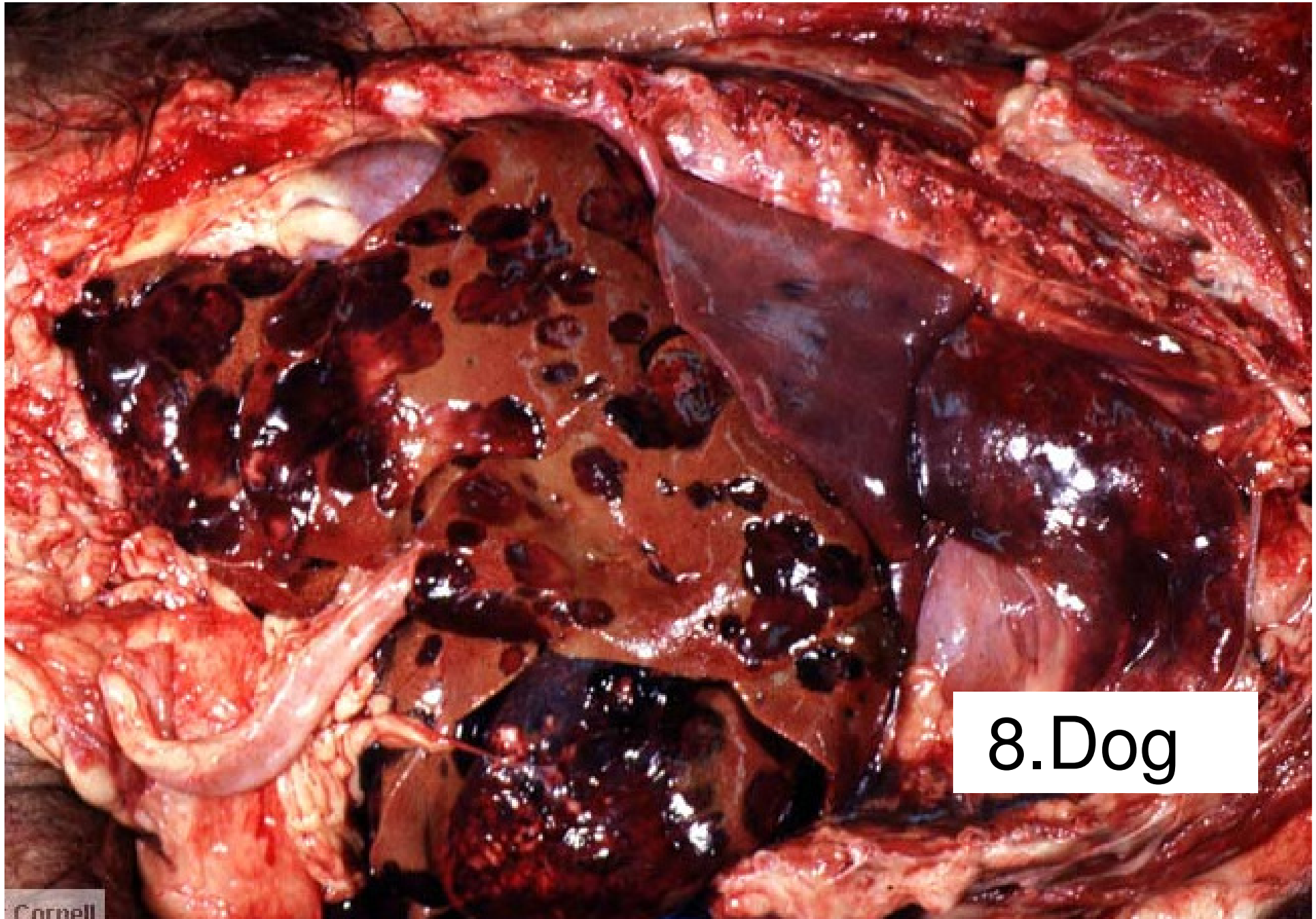




6. Calf

## 7. Love Bird





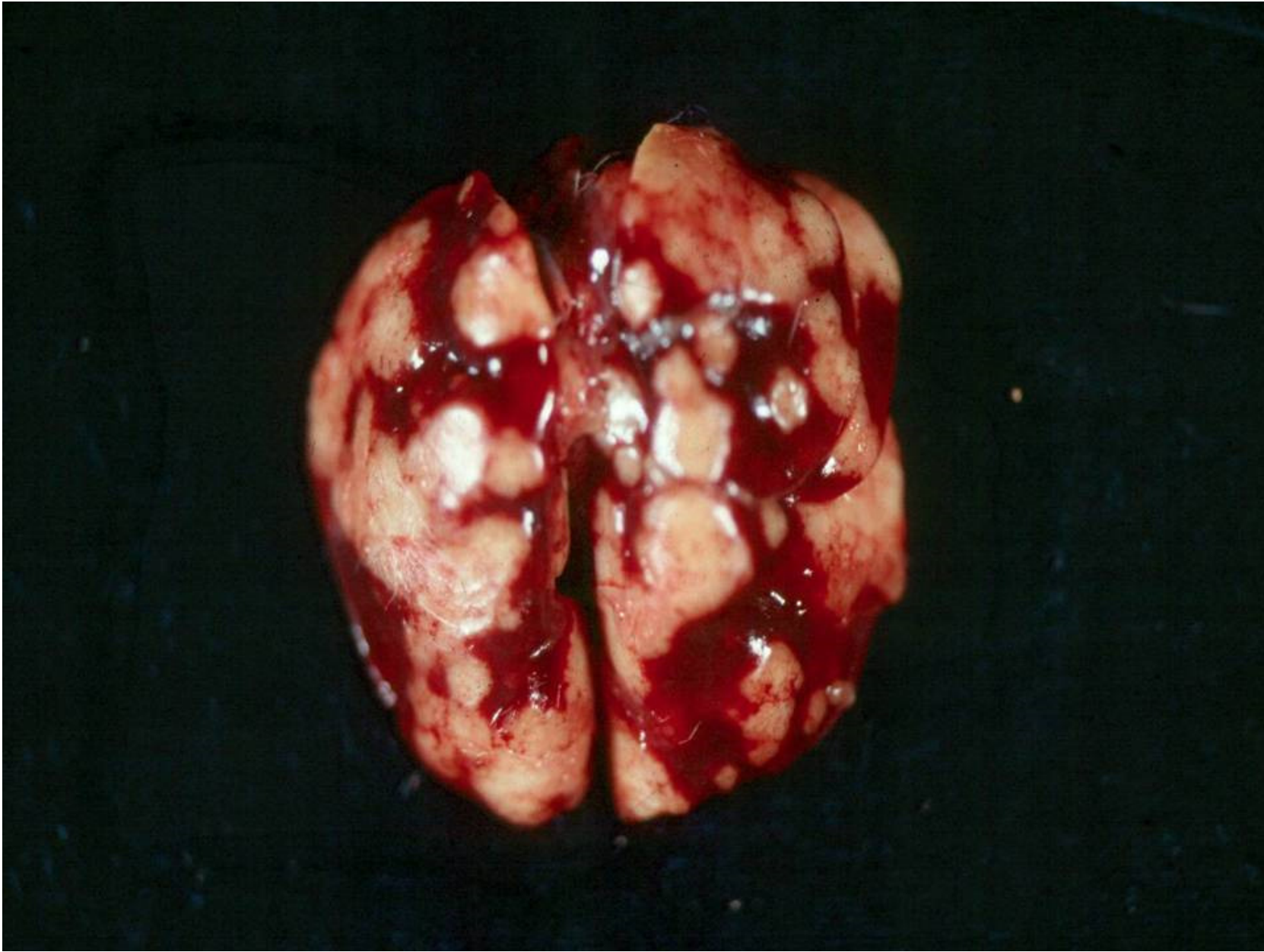
8.Dog





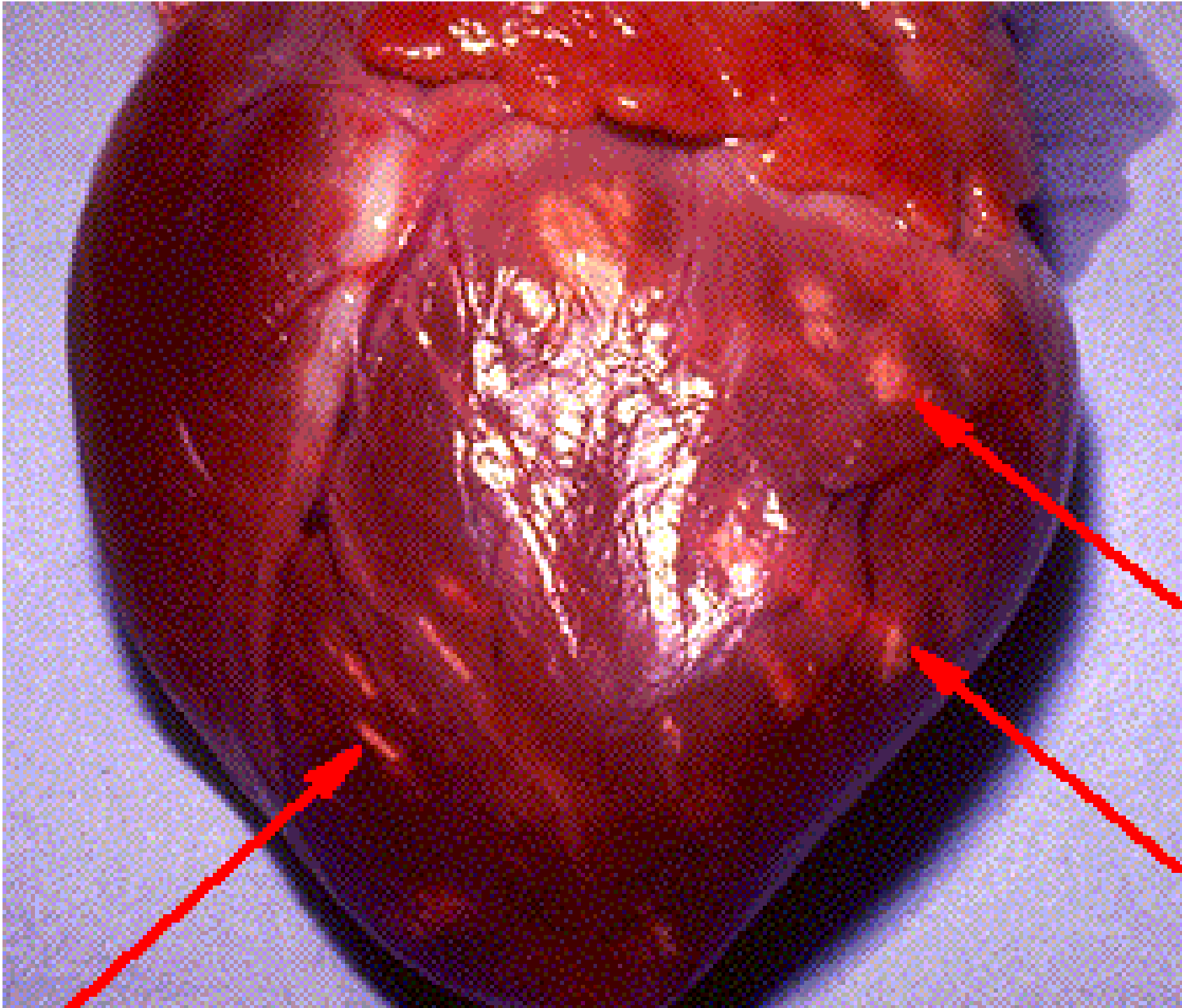
Ox

9. Ox, Skin



10.Rat





11.  
Pig



Pig

12.  
Rabbit



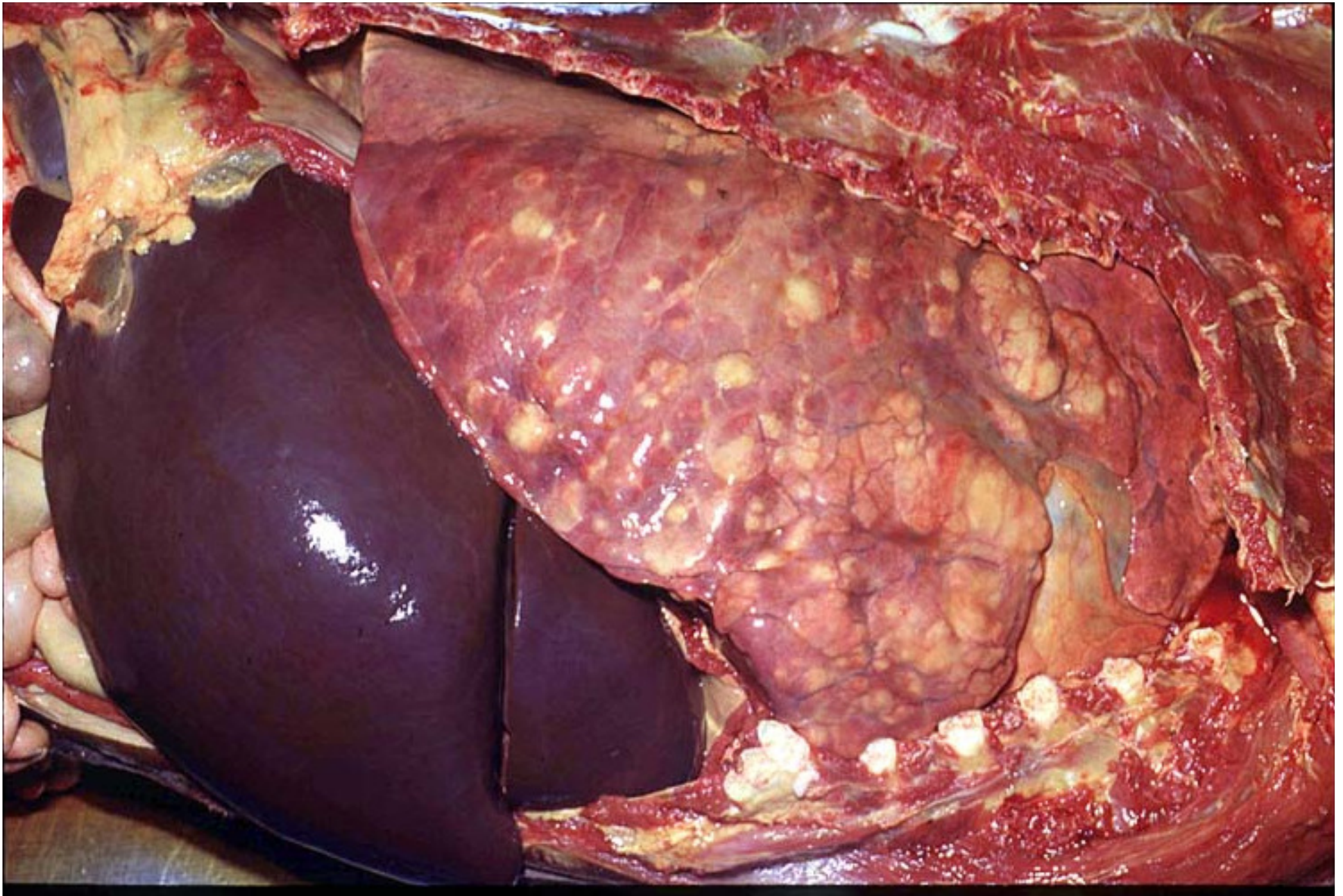


13.Dog

# 14.Cheetah

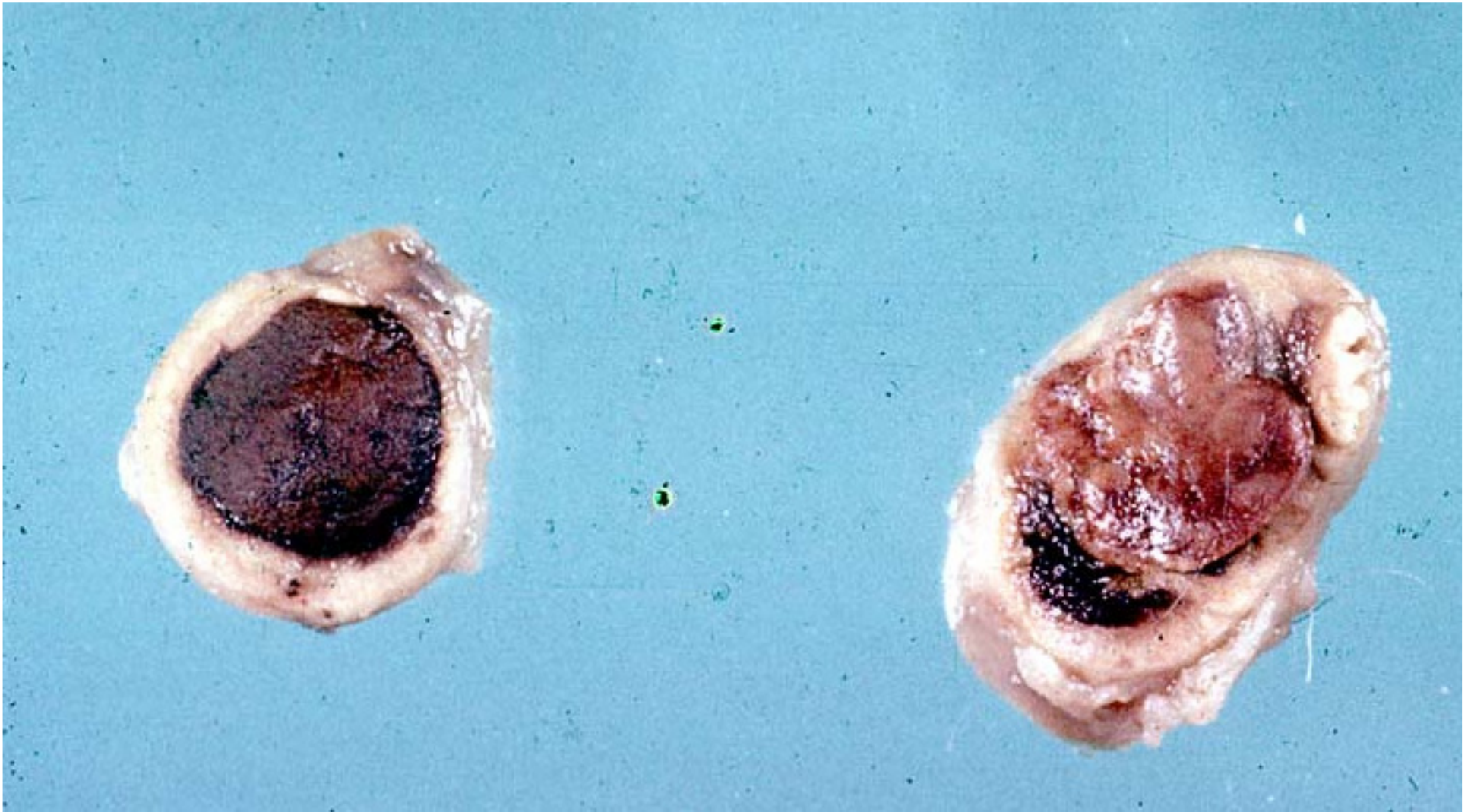




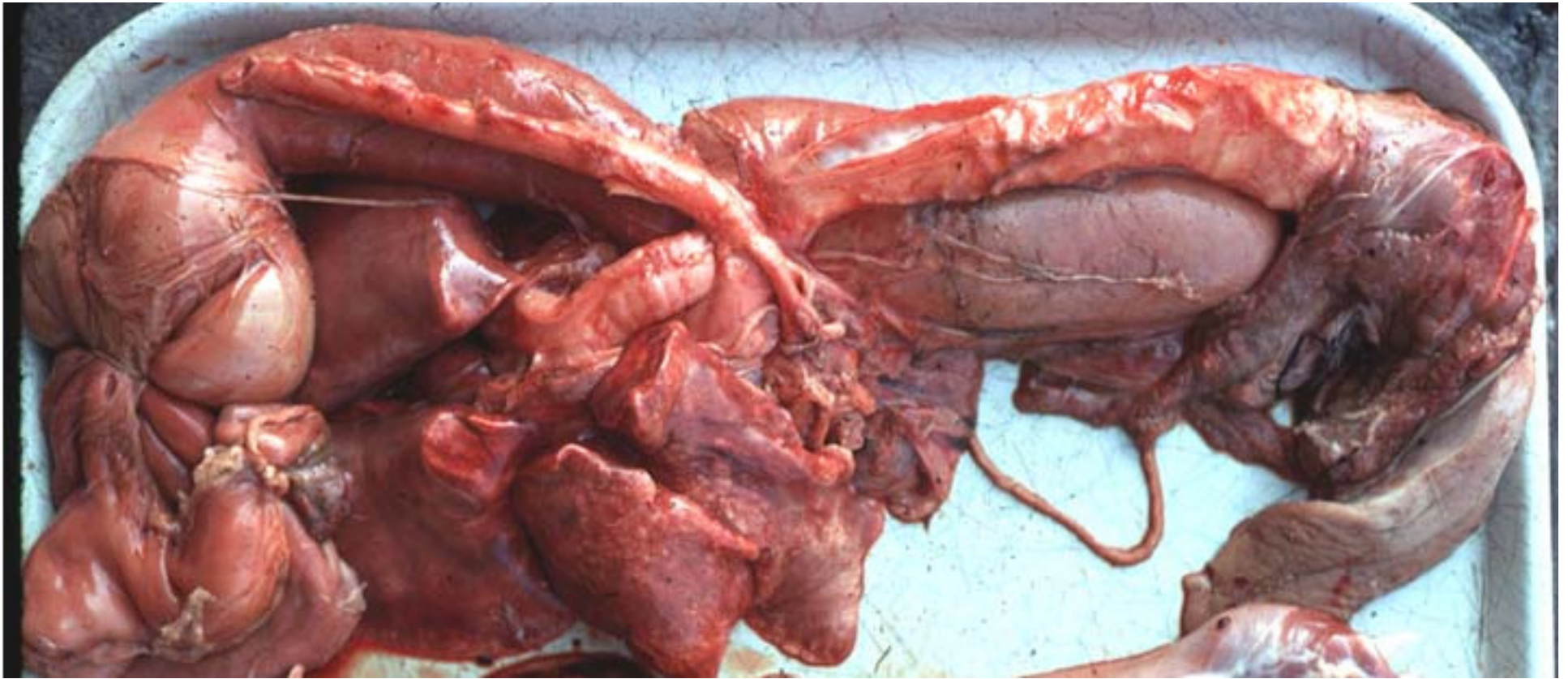


15. Foal



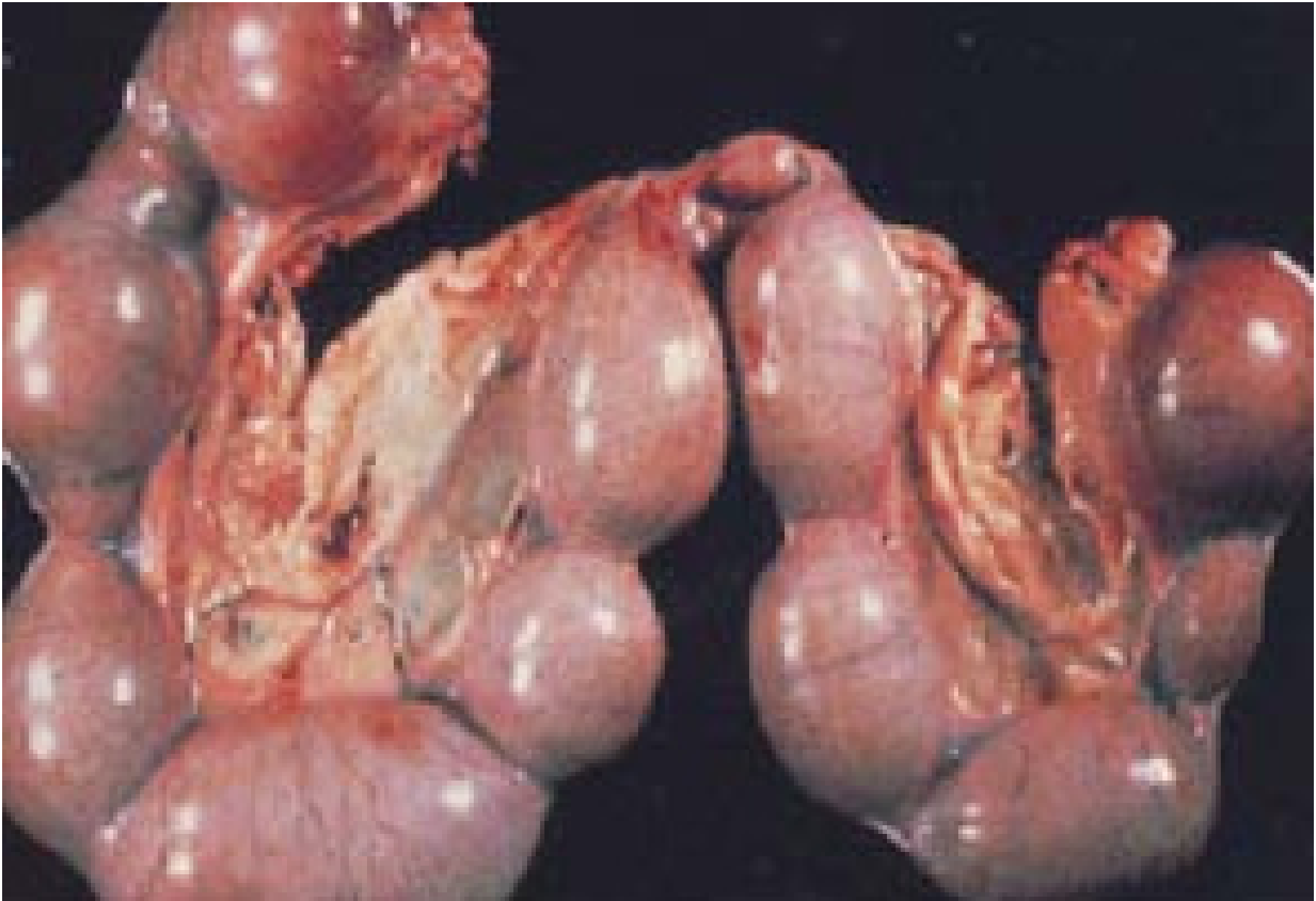


16.Opossum負鼠

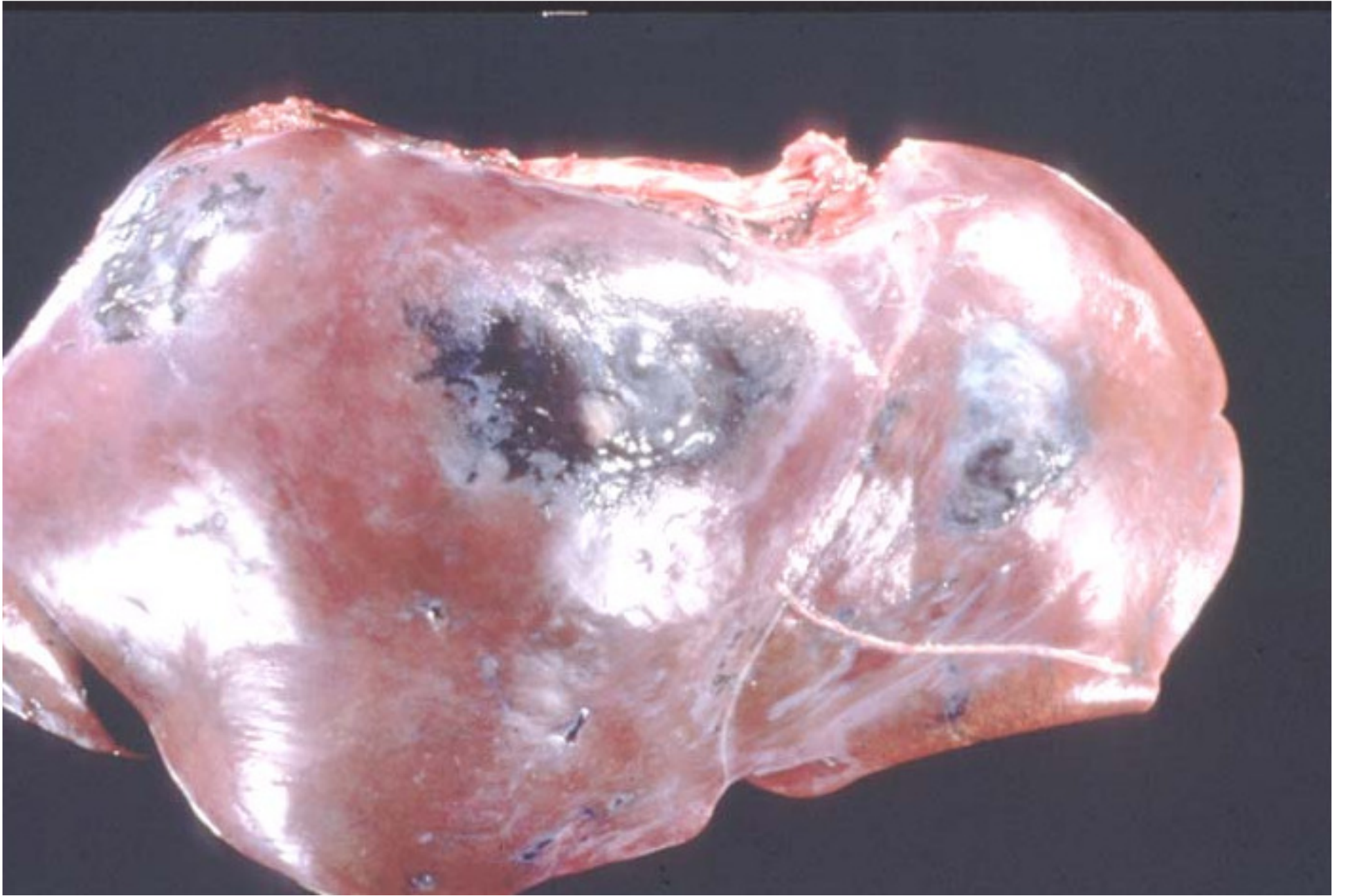


17.Dog





18.Dog



19. Ox

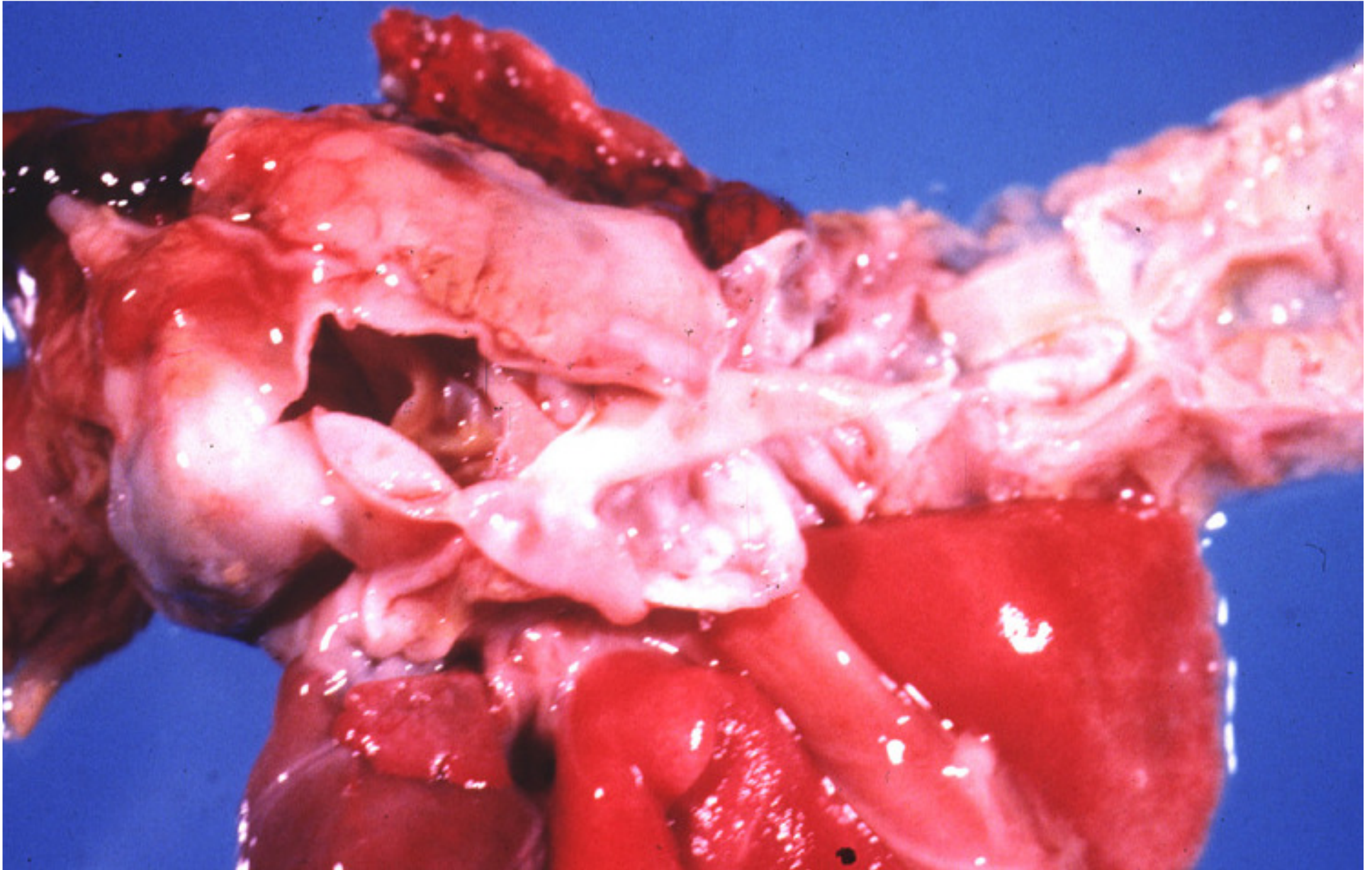


20.Mouse



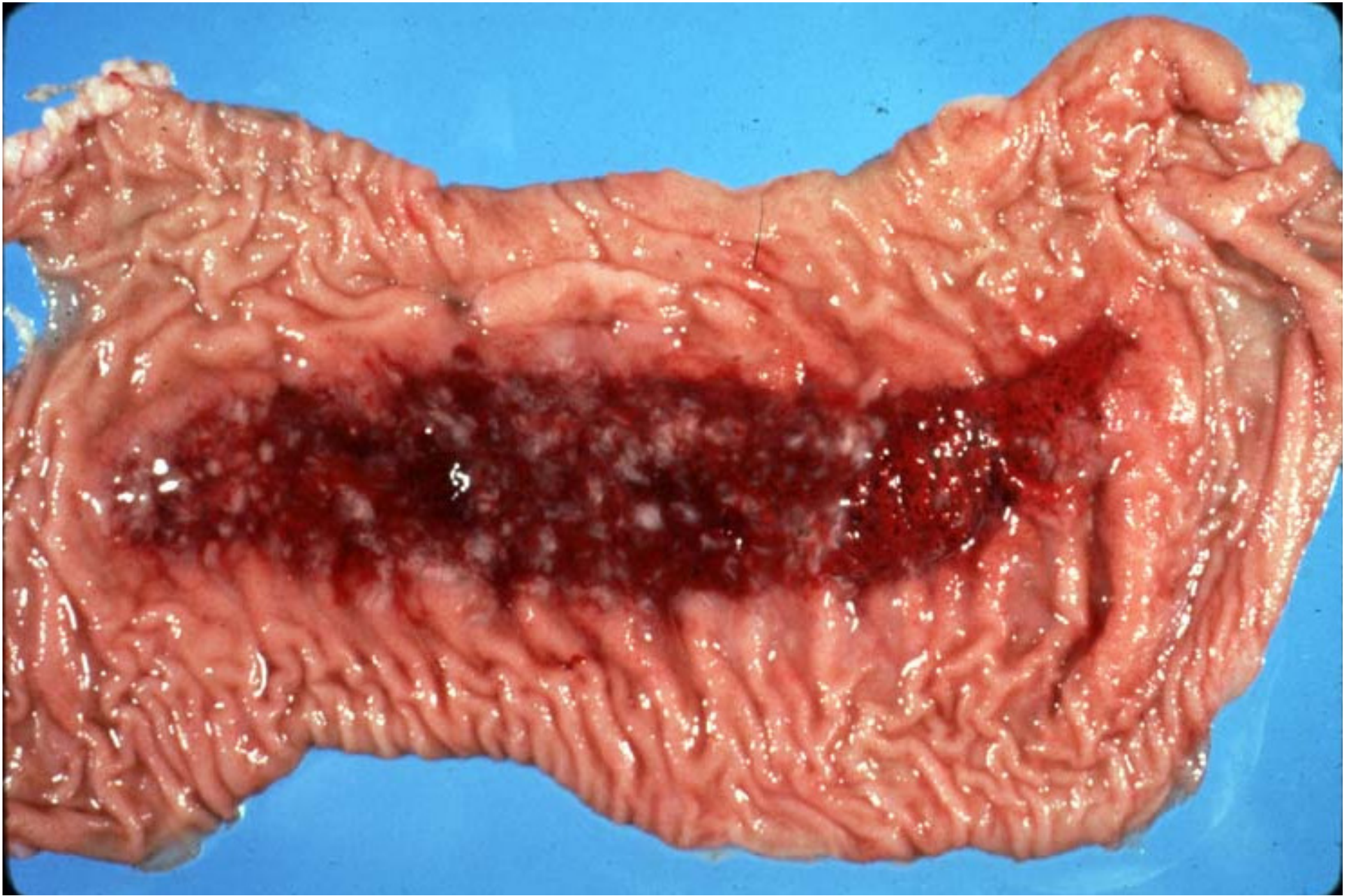
21.Pig





22. Wood Chuck





23. Ox

24.  
Nu  
mice







25. Mice



- The END

