

切片連結：http://140.120.114.107/ivp_slide_view.php?id=1157

切片名稱：Case 2.CS16_1204A

Case 2. CSVP 2017-2924 (CS16-1204, GIVP, NCHU, F.Y. Tsai, C.H. Shih, J.W. Liao)
Canine, 3-year-old, castrated male. Chronic soft stool with blood was noted and lasted for 1 month. Canine parvovirus test was negative. No polyp and mass was found by colonoscopy, but the mucosa was edematous and reddish. Exploratory laparotomy and biopsy was performed on December 2, 2016.

犬之原藻症

Protothecosis in a dog

蔡芳宜¹、施正心^{2,4}、廖俊旺^{1,3,4}、張文發⁴

Fang-Yi Tsai, MS¹, Cheng-Hsing Shih, DVM^{2,4}, Jiunn-Wang Liao, PhD^{1,3,4},
Wen-Fa Chang, PhD⁴

¹MS, Department of Veterinary Medicine, National Chung Hsing University (國立中興大學獸醫學系研究所)

²Department of Veterinary Medicine, National Chung Hsing University (國立中興大學獸醫學系)

³Graduate Institute of Veterinary Pathobiology, National Chung Hsing University
(國立中興大學獸醫病理研究所)

⁴Animal Disease Diagnostic Center, National Chung Hsing University
(國立中興大學動物疾病診斷中心)

A 3-year-old castrated Taiwan dog was referred to local animal hospital for examination due to the chronic soft and bloody stool lasting for 1 month by the owner's observation. Considering the clinical signs, canine parvovirus was suspected but with negative result, in addition, no polyps or masses were noted after the colonoscopy and merely edematous and reddish mucosa existed/presented in the colon. For further precise and specific diagnosis for the treatment, portion of the jejunum, ileum and colon were surgically biopsied with exploratory laparotomy on December 2, 2016. During the surgery, swollen lymph nodes around the ileocecal valve, and a red lesion measured approximately about 1 mm in diameter on the greater omentum were noted and were submitted for histopathological examination along with the intestines. Microscopically, diffuse submucosa layer of colon and ileum were expanded by numerous intracellular/extracellular, round to oval algae that have a clear thick cell wall and admixed with abundant macrophages, lymphocytes and plasma cells. Therefore, with the strongly evident presented in this case, a protothecosis in a dog was confirmed.

Keyword: Protothecosis, prototheca, dog

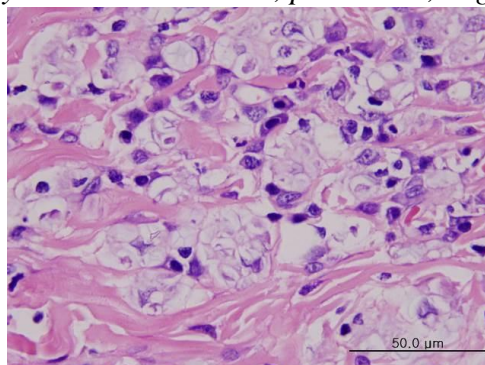


Fig. 1 The organisms were round to oval with thick cell walls. H&E

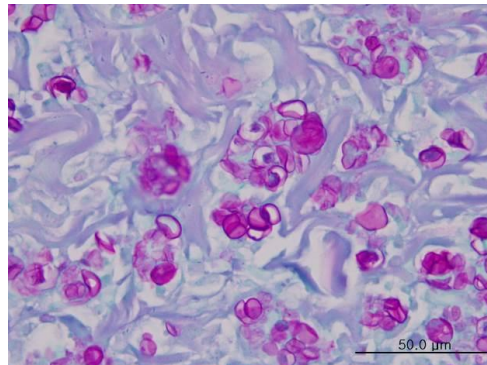


Fig. 2 Although organisms are easily discernible in H&E stained sections, they are better visualised in PAS stained sections.

